

PROVU[®]
SERIES

ProtEX[™]
MAX

Precision Digital Presents

Introduction to The PROVU & ProtEX-MAX Great New Features!

Webinar Organizers



Joe Ryan

Sales & Marketing Manager,
Product Manager

Precision Digital
Corporation



Devin Gates

Business Development
Specialist

Precision Digital
Corporation

What is the PROVu series?



- Full line of 1/8 DIN panel mount digital meters and controllers
- NEMA 4X & IP65 rated fronts for rugged installations
- Six super bright LEDs on a dual-line display
- Available in models to meet the demands of almost any application

What is the ProtEX-MAX series?



- Full line of FM, CSA, ATEX & IECEx approved, explosion-proof meters and controllers
- Rugged enclosure stands up to even the harshest environmental conditions
- SafeTouch programming buttons allow menu access without removing the enclosure cover
 - Program without having to declassify the area!

The Power of the PROVu, also available in large display and explosion-proof



- The ProtEX-MAX and Helios line of explosion-proof and large display meters and controllers are based on the PROVu line
- Almost every PROVu model's features and functions has an available large display and explosion-proof counterpart
 - e.g. - the PD2-6310 is a large display pulse input batch controller, the PD8-6310 is an explosion-proof pulse input batch controller, and the PD6310 is a panel mount pulse input batch controller

New Feature: Improved Super Bright LEDs



- LEDs have been improved to be even brighter than the old ones
- Easily visible in smoke, fog, dust, and, with optional SunBright display, even direct sunlight
 - The regular display is brighter than before, but the SunBright display is the brightest yet!
- Available on all ProVu models in September
- Available now on “H” SunBright display models, all ProtEX-MAX explosion-proof products, and the Helios large display

Side-by-Side Comparison

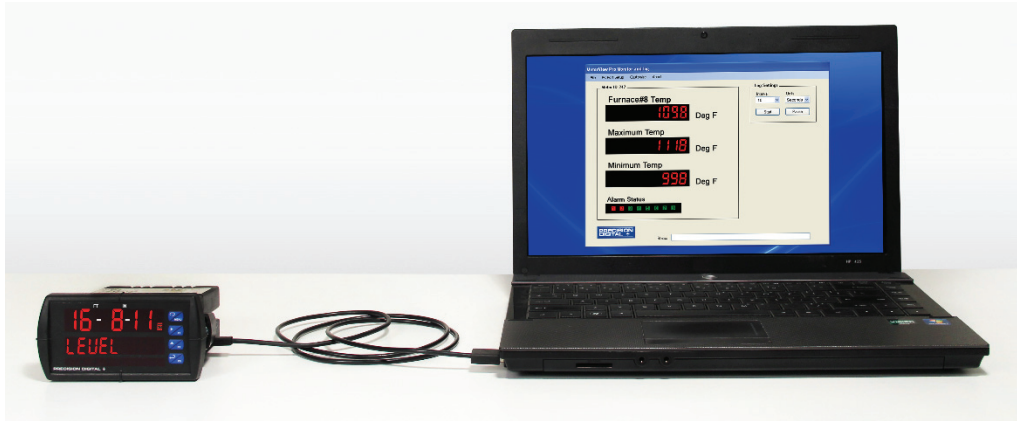


Original SunBright Display vs. New SunBright Display

- So bright it's hard to photograph!
- Upcoming standard models (R) as bright as original SunBright models (H)
- New SunBright sunlight readable models (H) are brighter than ever.
- SunBright display models (H) recommended for outdoor applications.
- Example: PD6000-6H7
- \$100 adder vs. PD6000-6R7

New Feature: USB Programming with PC Software

- Standard micro to standard USB A cable
- Programming software included on meter
- Cable included with every meter



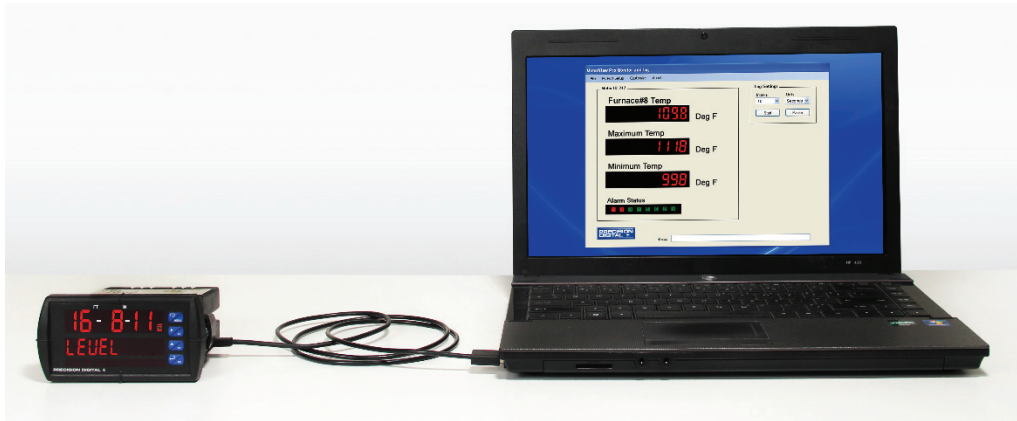
Easy to Connect for Programming

- Power the meter display and program with nothing but the USB cable
- Great for field, bench, or desktop programming



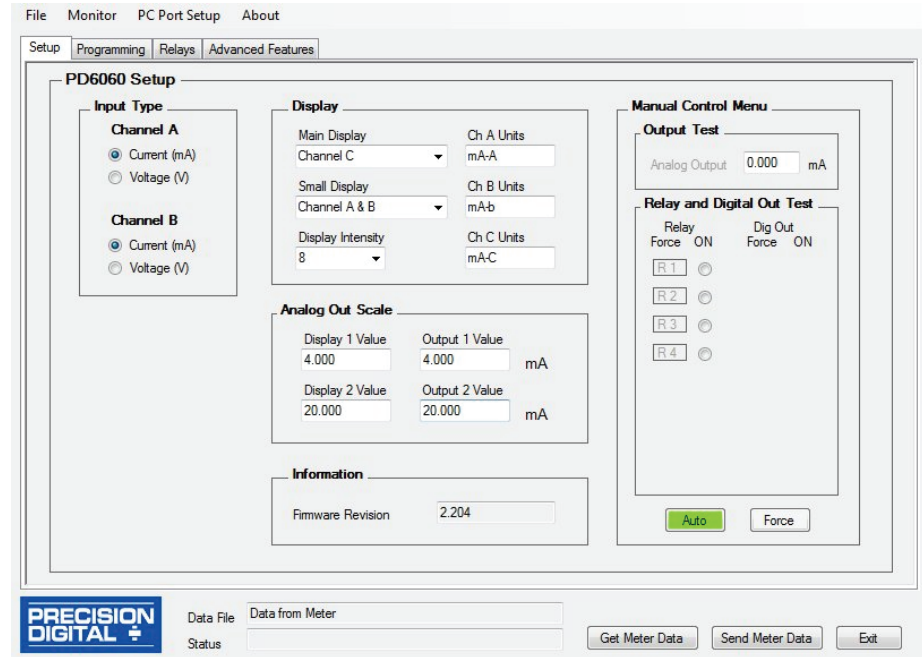
One Cable, No Downloads

- Program the meter quickly and easily with USB
- The simplest meter to program yet!



MeterView Pro Software

- MeterView Pro software allows all the meter settings to be programmed from a PC
- User friendly interface makes programming much simpler than navigating meter menus



Serial Adapters for Field Connectivity

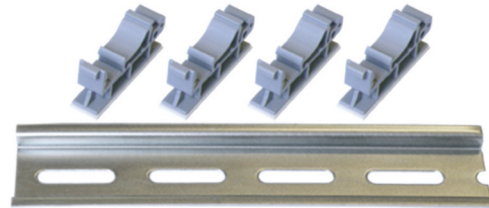
- PDA1232 ProVu
RS-232 Serial
Adapter



- PDA1485 ProVu
RS-485 Serial
Adapter



- PDA1002 DIN Rail
Mounting Kit for Adapters



- RS-232, RS-485, and
USB converters available

Questions?

- Please enter your questions in the 'Questions' window



ProVu Series Overview



- Brief look at the ProVu line
- Many shared features
- Select input type and basic function

Process (PD6000)



- Accepts analog current and voltage inputs
- Ideal for displaying process variables in level, pressure, speed, humidity applications
- Pump alternation control for level applications
- Signal input conditioning for open channel flow and irregularly shaped tanks
- Second display line can show units or another scale such as height and volume of a tank

Feet and Inches Level Display (PD6001)

- Easy to understand feet and inches display
- Perfect for level applications
- Pump alternation control and signal input conditioning
- Dual scale capability to display volume on lower display



Rate/Totalizer (PD6200 & PD6300)



- Analog input and pulse input models available
- Display rate and total at the same time
- Grand total calculation with non-resettable option
- Pulse input model allows for 4-20 mA retransmission

Dual Input (PD6060, PD6262, & PD6363)

- Accept two analog or pulse inputs simultaneously
- Dual input process meter and rate/totalizers
- Display both inputs and math functions performed on the inputs
 - Includes addition, difference, multiplication, average, ratio, concentration, etc.



Batch Control (PD6210, PD6310, & PD6310-WM)



- Analog and pulse input batch controllers
- Display preset and batch total simultaneously on dual-line display
- Multistage batching with 4 relays
- Onboard digital inputs allow for external control stations
- Automatic overflow protection
- Available in NTEP Weights & Measures approved version

Strain Gauge (PD6100)

- Load cell or mV input
- Up to twelve load cells for additional accuracy
- Auto zero feature helps to eliminate drift
 - Manual tare and zero features also available
- Display the strain input in two different scales, such as weight and volume



High Voltage and High Current (PD6400)



- Accepts high voltage and high current inputs simultaneously
- Displays both inputs or apparent power calculated from the inputs
- Any variable may be retransmitted as a 4-20 mA signal
 - Up to 3 4-20 mA outputs available

Temperature (PD7000)

- Accepts a wide range of thermocouples and RTDs
- 1° or 0.1° Resolution
- Averages Up To 10 RTD Sensors
- Automatic Cold Junction Compensation
- Temperature units display inline with the temperature measurement



Modbus® (PD6080, PD6081, PD6088, & PD6089)



- Can operate in Modbus® RTU master, slave, and snooter (packet sniffer) mode
- Polls and displays up to 16 process variables
- Available math functions to perform on the inputs
- Available in feet & inches display model and with additional dual analog inputs

Flow Control



Key Features

- NEMA 4X / IP65 front
- Display flow rate and total simultaneously
- Accepts most pulse inputs
- 5, 10, or 24 VDC flowmeter power supply

Tank Level Monitoring

Key Features

- NEMA 4X / IP65 front
- Sunbright Display for sunlight readability
- Feet and Inches Display
- Dual-Scale from a Single Transmitter 4-20 mA
- 24 VDC Supply



Wastewater Treatment Plant Coagulant Monitoring



Key Features

- NEMA 4X / IP65 front
- Versatile for Use Throughout Plant
- Two 24 VDC Power Supplies Available to Power Input Transmitter and 4-20 mA Output

Rail Car Filling Batch Control



Selling Features

- Explosion-proof NEMA 4X enclosure
- Safetouch® thru-window buttons control batch without removing the cover and eliminates the need for external buttons
- 4 relays
- SunBright display for outdoor applications

Q & A

- Please enter your questions in the 'Questions' window
- Apologies if we do not get to your question today. We'll contact you offline with a response as soon as possible.



We Want to Hear From You

Help us choose our next webinar topics.

- Share with us here or e-mail marketing@predig.com
- Do you have topics you'd like to see discussed?
 - Product questions
 - Industry questions
 - Daily difficulties
 - Instrumentation and controls terminology
 - Difficulties with equipment
 - Webinar series feedback



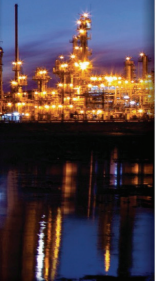
Precision Digital

Helping you with the right displays and controllers for your application.



Your source for:

- Loop Powered Meters
- Digital Panel Meters
- Hazardous Area Instruments
- Large Display Meters
- And more



For more information



Webinar info
www.predig.com/webinars



1-800-343-1001



sales@predig.com



www.predig.com

thank you