

Learn About
the Great New
Features on the

ConsoliDator+ Multivariable Controller



Presenter



Joe Ryan
VP of Sales & Marketing

“Feel free to call me after the webinar to discuss any of these great new features in more detail. I will be happy to talk to you.”

Phone: (508) 315-5231
Email: jryan@predig.com

Takeaways



- Learn about all the great new features on the ConsoliDator+ and see it live
- See real application screens you can discuss with your customers
- Learn why these new features matter to *you*

Quick Overview



- Multi-channel controller for process display, alarm and control applications
- Accepts 4-20 mA inputs, flow meter pulse inputs, digital inputs, and Modbus RTU
- Displays numeric and bargraph format on a large, 5.7" color display
- Multiple relays with user-definable actions, 4-20 mA outputs, digital outputs, Modbus RTU, and Ethernet Modbus TCP/IP
- 32 timers to control many processes or events
- Free ConsoliDator+ configuration software

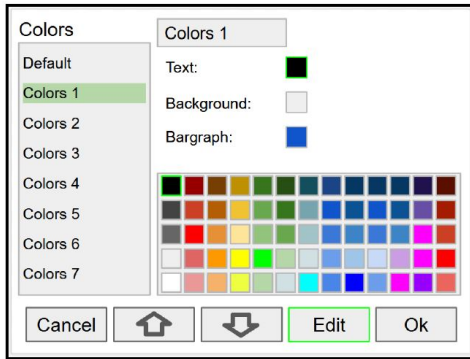


Great New Features

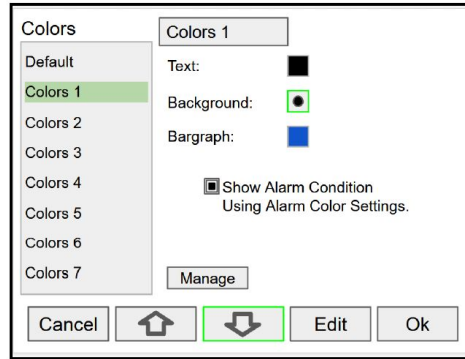
Great New Features

Color Selection

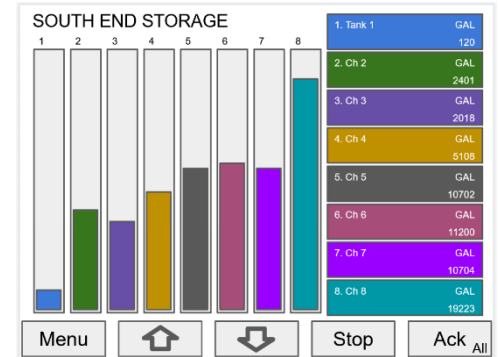
This feature allows you to choose from 65 colors to customize the screens. Color can be selected for text (value), backgrounds, bargraphs, and alarm conditions for channels, totals, and timers.



Choose from 65 colors



Select color for text, background, and bargraph



Using multiple colors on view screens

Great New Features

A1. High Alarm 1
8000.0/4000.0 OFF

1. Tank 1	7,190.6	Gallons
Alarm - Ack Alarm		OFF
Alarm - Reset Alarm		OFF
Alarm - Set Points		OFF
Simulate - Alarm		OFF

Cancel [Up Arrow] [Down Arrow] **Sim** A1

Setting Tank 1 to simulate an alarm

Simulation Mode

Inputs, channels, timers, alarms, and totals can be simulated from the View menu or from a function key.

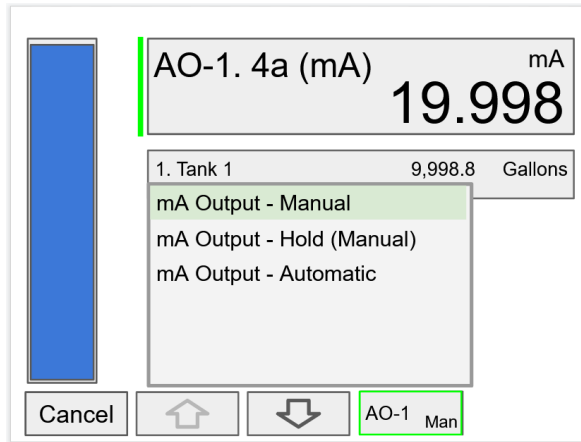
Note: Simulation parameters are not saved on power down. Up to eight parameters can be simulated at one time.

Great New Features

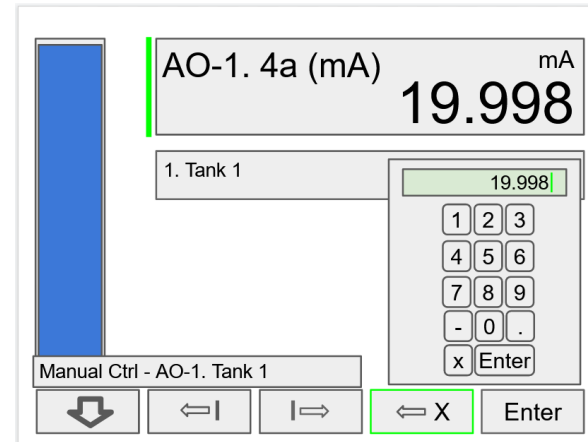
Manual Control

The analog outputs and relays can be controlled manually with this feature from the View menu or from a function key.

Note: Manual control parameters are not saved on power down. All analog outputs and relays can be controlled manually at the same time.



Analog output 1 is selected for manual control



Tank 1 is now set for manual control

Great New Features

1. Channel 1 Colors 1

Function: Scale Linear 2-Pt Bargraph

Input: AI-1. 2a (mA) 0% : 0

Units: Gallons 100% : 50000

Decimals: 0

Scale:

	Input (mA)	Output (Gallons/min)
1.	3.9982	0
2.	20.000	50000

Cutoff: 0 Gallons

Live Edit

Channel 1 is set for live calibration by using a live signal

Live Calibration

Individual channels may be calibrated using a live signal from a sensor or a calibrator without affecting the factory calibration used for scaling.

Example: Small Tank Level Live Calibration for Unknown Transmitter Parameters

Rather than programming the channel for specific mA values, pump out the vessel, and calibrate to 0%. Fill the vessel and calibrate to 100%.

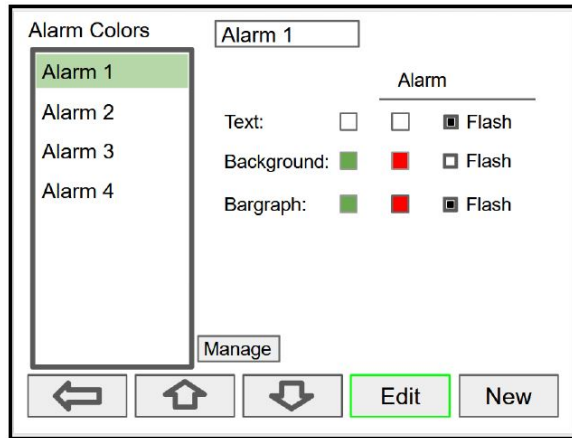
Very convenient for level and flow applications where the parameters of the transmitter or flowmeter are unknown.



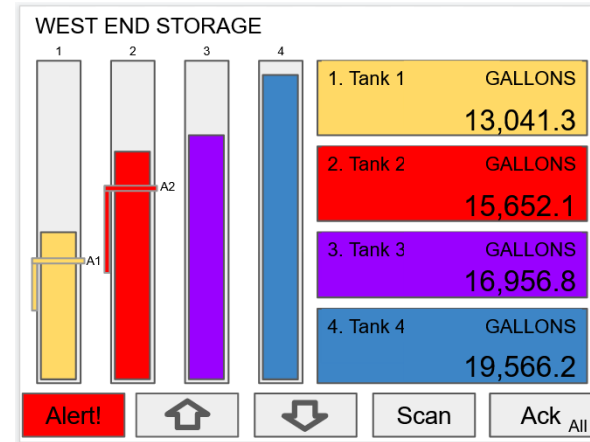
Great New Features

Alarm Functions

Alarms have been enhanced to enable settings based on day & time (daily, weekly). A flashing red Alert! Message has been added for active alarms, if enabled in the setup. For simulated parameters and manual control outputs, a yellow Alert! message is displayed.



Colors can be set for alarm conditions and set to flash



A flashing red alert! can be added to the alarm

Great New Features

System - Ethernet Settings

Lantronix XPort Device

MAC Address: 0080A3D50F9E

DHCP (for automatic IP Address)

IP Address:

Port:

Protocol:

Advanced Setup

HTTP Port: 80

Telnet Port: 9999

Cancel



Edit

Ok

Set the IP address and other basic parameters

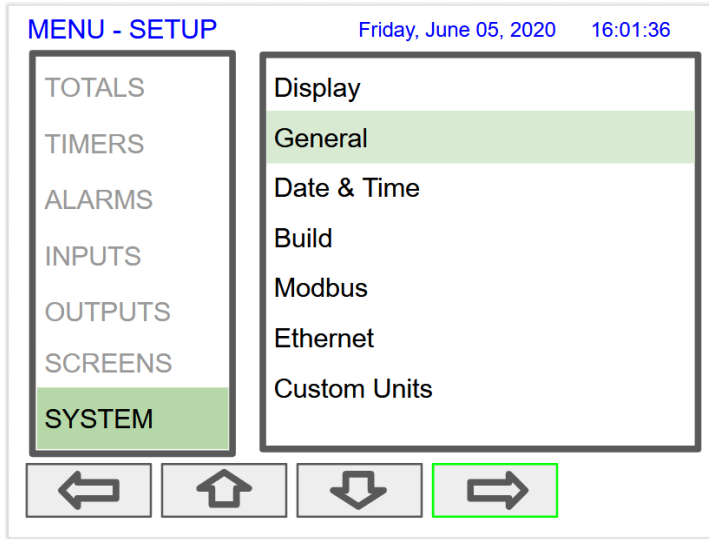
Ethernet Settings

Information has been added to the system menu and allows the user to set the IP address and other basic parameters.

The ConsoliDator+ supports Modbus over Ethernet, and this visibility makes it easier than ever for your IT, programmers, and engineers.



Great New Features

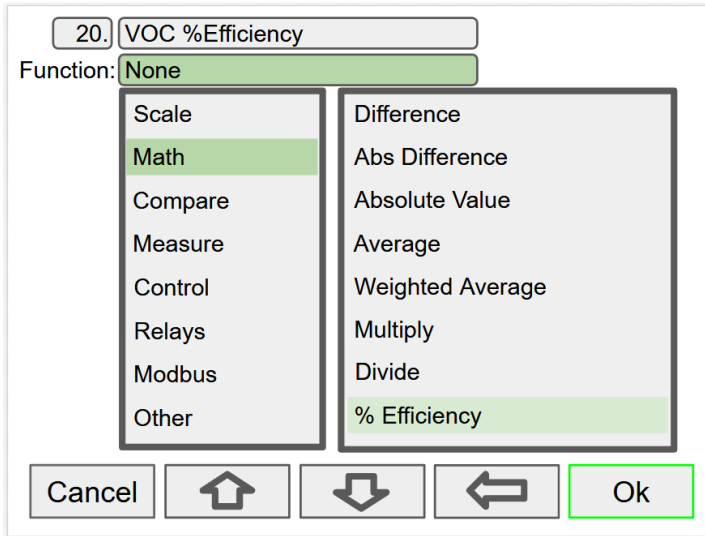


Real time clock is displayed at the top of the screen

Real Time Clock

The date & time is displayed on the top line of the Setup and View menus, and can be added to any screen. The date & time can also be the input to a channel. This allows for alarms, on-screen display, and other actions to be taken at specific times and days of the week.

Great New Features



Math functions can be applied to any channel

Math Functions

More functions have been added including Filter, Control, and Rate of Change. Alarm outputs and on-screen display can be used with any of these new math functions.

Great New Features

Engineering Units

None: No units

Time: seconds, minutes, hours, days & /sec, /min, /hr, /day

Distance (Height): cm, m, Inch, Feet, Ft-In, Yard, km, miles, custom

Volume: Gallons, GAL, L, IGAL, M3, BBL, BUSH, cuYD, cuFt, cuIn, LiBBL, BBBL, HECtL, quarts, pints, fl oz, mL, DT, M/T, custom

Pressure: psi, Pa, bar, hPa, kPa, MPa, GPa, inH2O, cmH2O, inHg, mmHg, atm, kg/cm2, kg/m2, mbar, Mbar, Torr, mTorr, custom

Weight: grams, Oz, Lb, lb, g, kg, ounces, tons, tonnes, custom

Temperature: C, F, K, Ra

Percent: %, PCT, Percent, custom

Amps: mA, Amps, custom

Volts: V, mV, Volts, custom

Counts: Pulses, Cycles, Counts, custom

Logic: ON, OFF, OPEN, CLOSED, YES, NO, START, RUNNING, STOP, STOPPED, PUMP ON, PUMP OFF, OK, OKAY, ERROR, WARNING, custom

Custom: Enter unit's name, type, base unit, and factor.

Units Conversion

This is supported for channels, totals, timers, and any function using those parameters. We have also expanded the List of Engineering Units.

Example 1: Automatic Channel Unit Conversion

Create a channel to automatically convert from known units into unknown units. Enter a channel for a known flowmeter output unit like gallons/second; and convert it with a second channel automatically to liters/min.

Example 1: Automatic Behind-the-Scenes Conversion

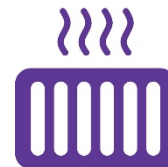
Sum two totals, but each is in a different unit such as gallons and liters. The ConsoliDator+ will automatically resolve those units into the unit for totalization.

Great New Features (Hardware)



Internal Fan

Automatic temperature-controlled fan turns on if the inside temperature reaches 50°C and increases the speed as the temperature rises to 60°C.



Internal Heater

Automatic temperature-controlled heater located behind the LCD turns on at 0°C, delivering the minimum power. If the temperature drops below -10°C, the heater delivers its maximum power.

For more information



1-800-343-1001



sales@predig.com



www.predig.com

thank you