

Welcome to the

# 2014 New Products Webinar

---



Helping You Make More Money on Every Transmitter Application

*Table of Contents*

**1**

*New Products Review*

**2**

*Solving Real World Applications*

# *New Products Review*

# ProtEX Series

Explosion-Proof Indicators and Controllers

- *A truly unique line of fully approved explosion-proof indicators and controllers*
- Easy to look at
- Easy to install
- Easy to program
- Loop, line, or battery powered
- ***Perfect companion for your transmitters and flowmeters***



# ProtEX Series

## ProtEX-MAX Line Features



**ProtEX**<sup>TM</sup>  
MAX

F M  
APPROVED

S F

Ex

IEC

Ex

CE

- Meters, rate/totalizers,
- batch controllers, annunciators, and modbus scanners
- Relays & 4-20 mA out options
- 24 VDC transmitter power supply
- SafeTouch<sup>®</sup> thru-glass buttons
- RS-485 with Modbus protocol standard on most models
- High/low AC/DC power options
- Sunlight readable displays

PRECISION  
DIGITAL

# ProtEX Series

Satisfies a Huge Variety of Applications

- Satisfies a huge variety of applications:
  - Process meters
  - Flow rate/totalizers
  - Dual-input process meters or flow rate/totalizers
  - Batch controllers
  - Temperature meters
  - Strain gauge meters
  - Modbus input scanners
  - Large display process & temperature meters
  - Alarm annunciators



# ProtEX Series

## Models Summary

### Process Meters

- PD663
- PD6800
- PD6870
- PD8-6000
- PD8-6060 (Dual-Input)

### Feet & Inches Level Meters

- PD6801
- PD8-6081

### Flow Rate Totalizers

- PD6820
- PD6830
- PD8-6200
- PD8-6262 (Dual-Input)
- PD8-6300
- PD8-6363 (Dual-Input)

### Strain Gauge

- PD8-6100

### Modbus Scanners

- PD8-6080
- PD8-6081 (Feet & Inches)

### Batch Controllers

- PD8-6210
- PD8-6310

### Temperature Meters

- PD8-765 (Process & Temperature)
- PD8-7000

### Alarm Annunciators

- PD8-154
- PD8-158

# ProtEX Series

## PD6830 Pulse Input Flow Rate/Totalizer



- Features
  - Automatic unit conversions
  - On-board data logging
  - RS-485 with Modbus
  - Operates from -40 to 75°C
  - Accepts most pulse inputs
  - Ex-proof, IP68, NEMA 4X
  - 4-20 mA and pulse outputs
  - SafeTouch® thru-glass buttons
  - Battery, DC, or loop powered
- MeterView EX Software
  - Configure PD6830 from PC
  - Connect PD6830 to PC with PDA8068 USB Serial Adapter





# Feet & Inches Level Meters

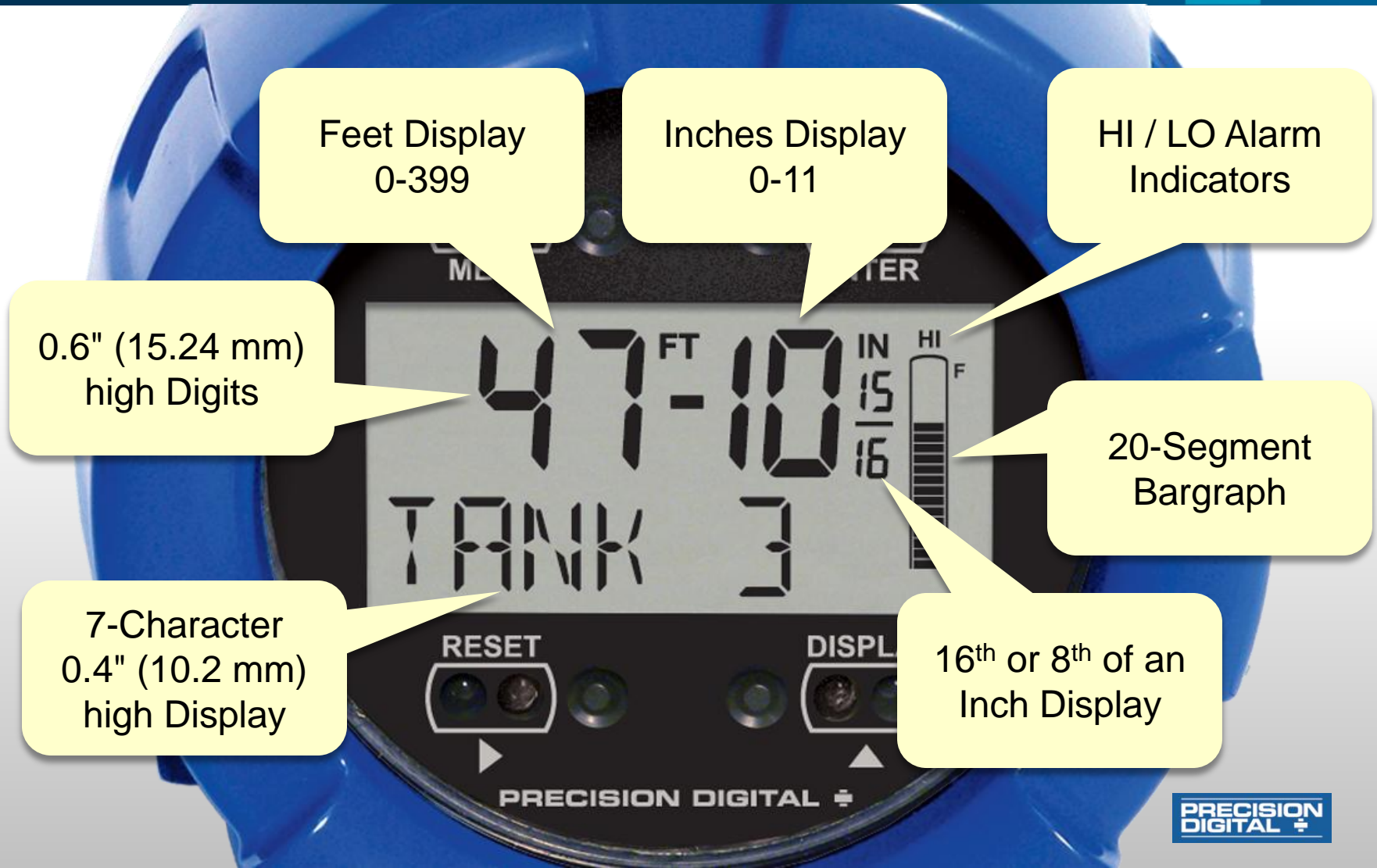
Only Meters on the Market that Show Feet and Inches!



- Display level in feet and inches
- Great for monitoring level of tanks, sumps, silos, or wells
- Bargraph on the PD6801 and PD6701 provides quick level overview
- 5 models available
  - PD8-6081: Exp-Proof LED
  - PD6081: Panel Meter
  - PD6089: Panel Meter
  - PD6701: Gen Purpose NEMA 4X
  - PD6801: Exp-Proof LCD
- Display level and custom tag

# Feet & Inches Level Meters

Show this to Customers!



Feet Display  
0-399

Inches Display  
0-11

HI / LO Alarm  
Indicators

0.6" (15.24 mm)  
high Digits

20-Segment  
Bargraph

7-Character  
0.4" (10.2 mm)  
high Display

16<sup>th</sup> or 8<sup>th</sup> of an  
Inch Display

# Feet & Inches Level Meters

How it Works



# Dual-Input Meters

Process Meter & Flow Rate/Totalizers



## Two main applications:

- Displaying two process variables
- Math functions on two inputs

## Available in:

- Explosion-Proof
  - PD8-6060 Dual-Input Process
  - PD8-6262 Analog Dual-In Rate/Totalizer
  - PD8-6363 Pulse Dual-In Rate/Totalizer
- 1/8 DIN Panel Meter
  - PD6060 Dual-Input Process
  - PD6262 Analog Dual-In Rate/Totalizer
  - PD6363 Pulse Dual-In Rate/Totalizer

# Dual-Input Meters

PD6262 in Action - Math Function



Math Function Result (C) + Channel A

The upper display shows the Sum of channel A and B  
The lower display toggles between totals A and B

# Dual-Input Meters

PD6262 in Action - Two Variables + Tag



Two Variables

Display toggles between two variables and corresponding tags

# Modbus Input Scanners

A New Dimensions of Display Possibilities

- Master, slave or snoop mode
- PD6081, PD8-6081 & PD6089 display in Feet & inches
- Scan multiple devices for 16 Modbus process variables (PVs)
- Automatically cycle PVs on the display, along with a unit or tag for each
- In Snooper mode they can sit anywhere on the Modbus network & display any process variable on the bus.
- Great for multivariable transmitters
- Free PC ScanView software



# Modbus Input Scanners

Modbus Scanners Alternating Display



Flow Rate

One PD6080 scanning three registers  
on a multivariable flow meter



# New Trident Options

2 Relays + 4-20 mA Output All in One Meter at a Great Price



- The Trident, Trident X2, and PD8-765 are now available with 2 relays + 4-20 mA output together in one meter
- We have priced the Trident with 2 relays and 4-20 mA very competitively at \$349.00

# Vantageview Series

Loop-Powered Indicators, Rate Totalizers, and Level Indicators

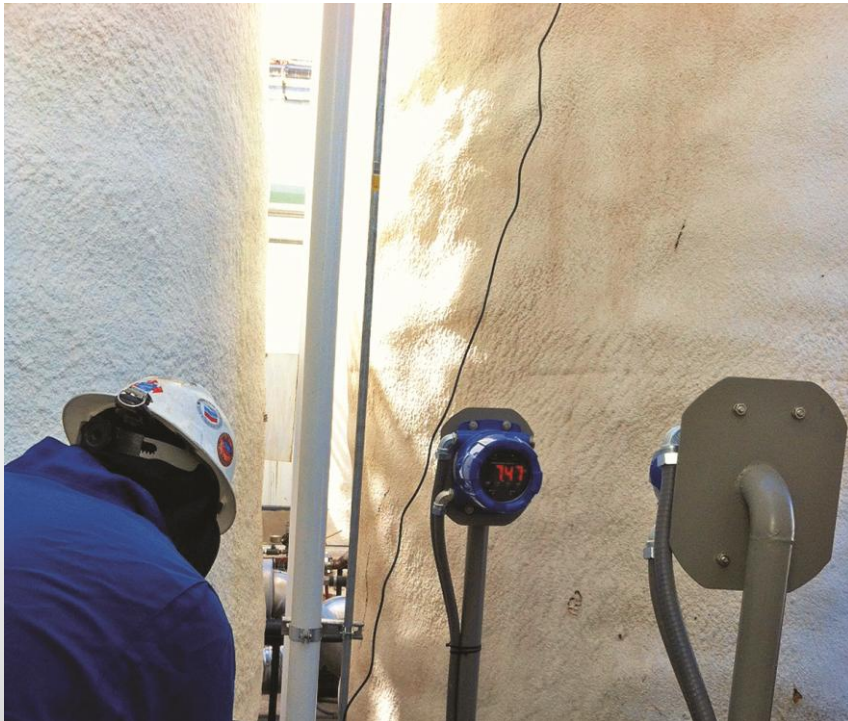


- Same features and functionality as the PD6800 ProtEX Series
- Rugged NEMA 4X plastic enclosure
- Ideal for safe area applications
- Easy wall or pipe mounting with built-in mounting flanges

# *Solving Real World Applications*

# Solving Real World Applications

## LEVEL - Remote Oil Tank Level Monitoring



### *Here's what's great about this application:*

- Customer has mounted the meters at eye level for convenient tank level indication.
- Meter can be read from far away
- Meter powers the transmitter
- **NO CLIMBING ON TANK TO GET LEVEL READING!**

# Solving Real World Applications

LEVEL - Crude Oil Holding Tanks



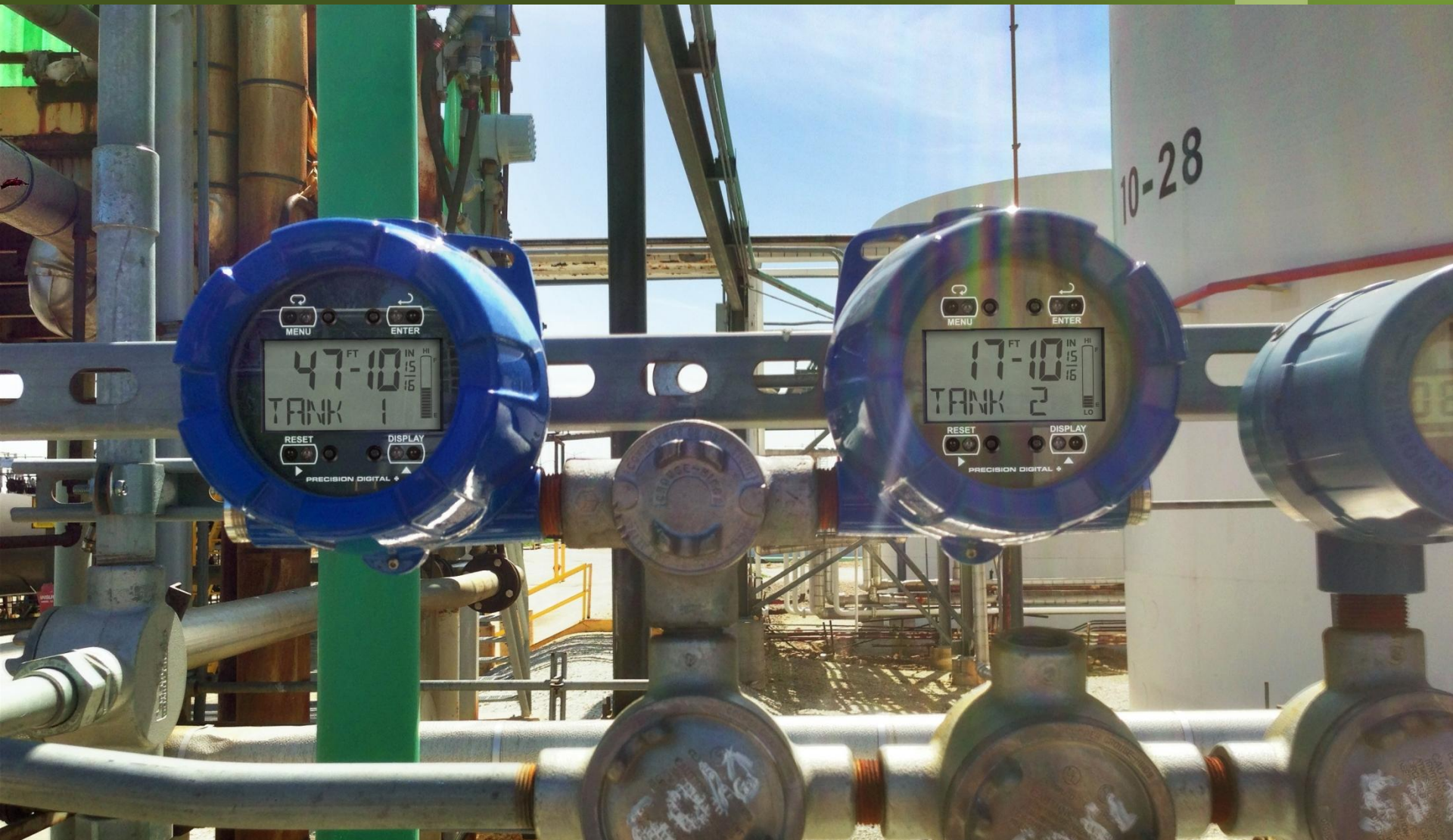
# Solving Real World Applications

LEVEL - Oil Tank Level Indication



# Solving Real World Applications

LEVEL - Oil Refinery Level Indication in Feet & Inches



# Solving Real World Applications

LEVEL - Boiler Drum Temperature Monitoring at Sugar Refinery



Notice how big and bright the Trident X2 is!  
Operators don't have to get out their chairs to read it!



# Solving Real World Applications

LEVEL - Oil Refinery Pump Control



Explosion-proof pump controllers with huge displays and built-in pump alternation control.

# Solving Real World Applications

FLOW - Measuring Flow of Petroleum Pipeline



# Solving Real World Applications

## FLOW - Rail Car Filling Application



Notice how the ProtEX-MAX display can actually be read!



## New 2014 Catalog iPad App

- Available for FREE on the App Store
- Contains complete product info:
  - Key features
  - Ordering information
  - Specifications
  - Drawings
  - Videos (Wi-Fi connection reqd.)
- Works mostly offline
- No pricing included
- Makes finding a product easier than ever!

# Questions?

Ryan Shea

*Inside Sales Specialist*

508-315-5219

508-655-7300 x19

rshea@predig.com

www.predig.com



# Thanks for Attending 2014 New Products Webinar

